

SKYLINE[®]

ARCHITECTURAL ALUMINIUM



Skyline Architectural Planters Overview Brochure

Architectural Planters

At a time when there is increasing awareness of the need to create green building environments, Skyline Architectural Aluminium offers a range of architectural planters designed for living plants and shrubs.

In addition to providing an attractive visual feature, such controlled planting can contribute to the absorption of carbon dioxide and the release of oxygen in built-up urban environments where planting would be otherwise impossible.



Applications

- Any building or area of the built environment where land is unavailable or limited for natural planting of trees and shrubs

Features & Performance

- An attractive and flexible architectural aluminium solution to planting within built-up urban environments
- Planters are easy to handle, weatherproof and maintenance free

Manufacture

- Manufactured entirely in the UK

Colours & Finishes

- BBA approved polyester powder coatings in 26 factory applied colours from our in-house powder coating facility
- Any BS or RAL colour available to order

Installation & Fixing

- Easy to install
- Delivered to site flat packed for site assembly



Architectural Planters Range Overview

Skyline Architectural Planters offer an ingenious solution to the greening of built urban environments. Our planters range gives architects and designers great flexibility to create practical and appealing planting schemes from simple to sophisticated.

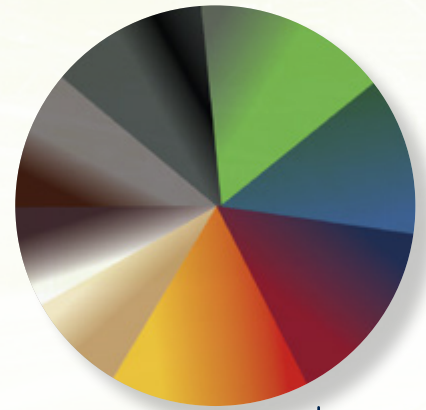
Our planters can be installed individually in small spaces, or in combination to dramatic effect in larger areas. Planter combinations of varying size, height and length can be used practically to define and separate space, as well as creating powerful visual interest.



Manufactured from 2mm and 3mm aluminium sheet, and incorporating the key features of raised feet and heavy-duty drainage base, Skyline Architectural Planters are designed for a long service life.

Skyline Architectural Planters are supplied in a range of standard sizes, with extender kits available for installing a series of planters in sequence.

If you cannot find a planter that meets your requirements in our standard range, we can manufacture a solution that is purpose made to your specific requirements.



Colours

Planters are available in Alumasc's trusted range of polyester powder coatings from our BBA approved Raincote range. Standard colours include 29 RAL colours. Alternatively, we can offer any additional BS or RAL colour to order.

Raised Feet

The two side panels of Skyline Planters are designed with raised feet, giving 20mm clearance at the base for drainage and ease of installation on an uneven substrate. The raised feet also provide an attractive shadow line at the base of the planter.





Planting Area

Skyline Planters are available in three ranges, 400, 500 and 600, in varying heights, lengths and depths. All sizes have been designed to give optimum planting area whilst ensuring adequate soil depth and drainage area.



Folded Edge

All planters have a fully folded top edge detail for strength and stiffness. This feature gives Skyline Planters a smooth overall appearance without sharp edges.



Integrated Drainage

An integral base plate ensures that soil weight is evenly distributed at low level whilst acting as an anchor for the planter. The base plate incorporates holes for water drainage and rigidity channels lengthwise for strength.



Architectural Planters



These pages show our standard range of architectural planters, which are delivered to site flat packed for site assembly. Planters are powder coated in a wide range of standard colours, with any BS or RAL colour available to special order.

Skyline Architectural Planters can be installed in sequence and in varying sizes and colours to create texture and interest in a space.

400 Planter Range

The 400 Skyline Planter Range comprises a 400mm deep planter, available in 400mm, 500mm and 700mm heights, and in lengths of either 1m or 1.5m.



Depth (mm)	Height (mm)	Length (mm)	Product Code
400	400	1000	AP44/100PPC
400	400	1500	AP44/150PPC
400	500	1000	AP45/100PPC
400	500	1500	AP45/150PPC
400	700	1000	AP47/100PPC
400	700	1500	AP47/150PPC

Note: other sizes can be made to order.

500 Planter Range

The 500 Skyline Planter Range comprises a 500mm deep planter, available in 500mm and 700mm heights, and in lengths of either 1m or 1.5m.



Depth (mm)	Height (mm)	Length (mm)	Product Code
500	500	1000	AP55/100PPC
500	500	1500	AP55/150PPC
500	700	1000	AP57/100PPC
500	700	1500	AP57/150PPC

Note: other sizes can be made to order.

600 Planter Range

The 600 Skyline Planter Range comprises a 600mm deep planter, available in 500mm and 700mm heights, and in lengths of either 1m or 1.5m.



Depth (mm)	Height (mm)	Length (mm)	Product Code
600	500	1000	AP65/100PPC
600	500	1500	AP65/150PPC
600	700	1000	AP67/100PPC
600	700	1500	AP67/150PPC

Note: other sizes can be made to order.

Colours

Colour can play a vital role in architecture, which makes Skyline Architectural Aluminium a trusted material of choice for architects and designers wishing to explore the full possibilities of colour and finish in modern building.

Following extensive research and development, Alumasc's in-house powder coating facility creates a perfect and consistent factory finish to all Skyline manufactured goods. Skyline solutions can make bold visual colour statements or blend sympathetically with other features of a building, creating design of individuality and quality that will stand the test of time.

Alumasc's Skyline products are available in plain mill finish or polyester powder coated from the BBA approved Raincote range.



We can match any BS or RAL colour of your choice, including anodic colours and stone effect finishes.

Standard Colours

The standard aluminium RAL colour range includes a choice of 29 colours in smooth finish with some textured finishes also available. We can offer any additional BS or RAL colour to order, including anodic colours and stone effect finishes.

Colours are produced with a 30% gloss unless otherwise stated.





RAL 7022M
Umbra Grey
Matt



RAL 7024M
Graphite Grey
Matt



RAL 7032M
Pebble Grey
Matt



RAL 7035M
Light Grey
Matt



RAL 7037M
Dusty Grey
Matt*



RAL 7038M
Agate Grey
Matt



RAL 7040M
Window
Grey Matt



RAL 8014M
Sepia Brown
Matt



RAL 8017M
Chocolate
Brown Matt



RAL 8019M
Grey Brown
Matt



RAL 9005M
Jet Black
Matt



RAL 9006M
Metallic Silver
Matt



RAL 9010M
Pure White
Matt



RAL 9016M
Traffic White
Matt



RAL 9016M/TXT
White Matt
Textured



RAL 9017M
Black Matt
(60% Gloss)



BLACK/TXT
Black Textured



Colours are reproduced for general guidance only. For exact colour and finish references, please contact Alumasc for colour swatch samples and for further information.

Planters Assembly Guide

Components

- 1 Front/Back panel x 2
- 2 Side panel x 2
- 3 Base plate x 1
- 4 Button head m6 Allen head socket bolts*
- 5 Spire spring u-clips*

* Quantities vary depending on planter size, x8 on small planters and x12 on larger planters.

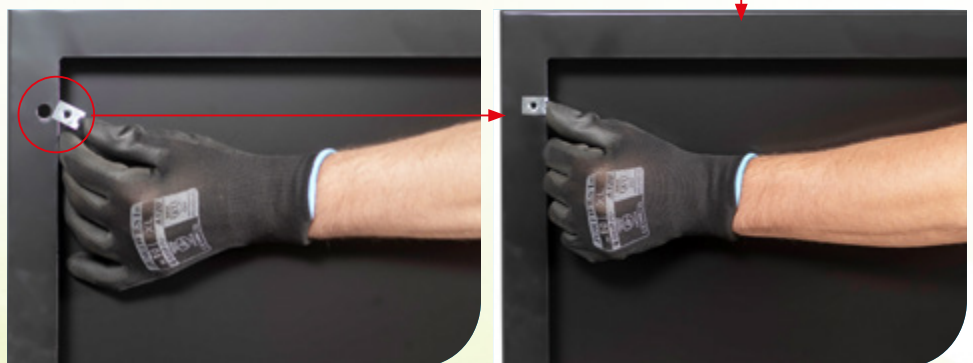
Tools required (not included)
4mm Allen key.



1. Check components and lay them out flat to ensure that all are present. Identify the top and bottom edge of each panel to ensure correct alignment in preparation for assembly. During assembly, ensure that the outer coating is protected to avoid scratching or damage – for example, do not lay panels on a hard concrete or an uneven, potentially damaging substrate. Use a cardboard or other protective sheet during assembly.

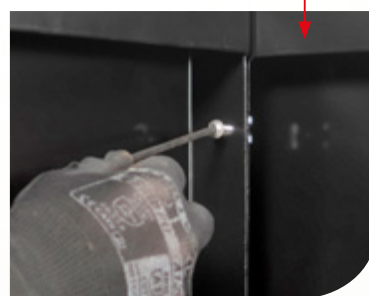


2. Insert the spire spring u-clip to each corresponding hole on the front/back panel (x8 or x12 depending on planter size). Ensure that u-clip is installed the correct way around with the thread to the back of the hole.





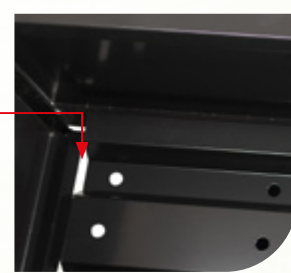
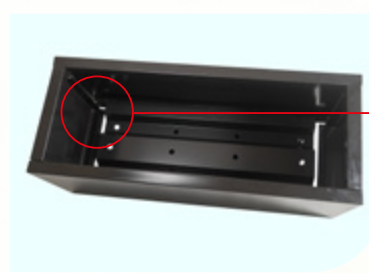
3. Starting at one end, offer the side panel up to the front/back panel and align with the corresponding holes and u-clip.



4. Using the bolts provided, insert and tighten using a 4mm Allen key. Ensure that the top edge of the planter is flush before tightening.



5. Continue the procedure noted in Point 4 until all four panels are assembled.



6. Insert base plate by simply placing inside the planter. Note that the channel should face downward with the edge of the base plate hooking over the front/back panel. This ensures that the weight of the soil will not cause displacement/distortion of the front, back and side panels.

7. Prior to planting, ensure that the planter is on level ground. If installing on balcony, decking or any raised platform, ensure that the platform is structurally sound and capable of taking the weight. Before filling with soil, it is recommended that a layer of garden fabric is used to line the planter; this will help protect the aluminium from direct contact with the soil.



Line the inside with garden fabric prior to planting

Quality & Values



Quality

Combining proven materials, advanced manufacturing, a skilled workforce and more than 50 years of industry experience, Skyline delivers superior quality and innovation.

Skyline Architectural Planters are manufactured from high quality 2mm or 3mm thick aluminium sheet.

Our in-house BBA approved powder coating facility plays an integral part in our quality assurance procedure, which enables strict control of our finishing process. The BBA approved polyester powder coating system is available in 26 standard colours, with any BS or RAL colour available to order.



Fire Regulations

Fire rating is a critical factor today. Solid aluminium sheet is classified as non combustible. Powder coated aluminium, Interpon D1000 series and D2000 series have been tested to BS476, parts 6 & 7 and have been deemed to have met the criteria for class 0 building regulation approval.



Also in the Skyline range



Fascias & Soffits

Top of the range roof edge details to suit all designs and budgets. Whether you choose from the standard range or bespoke design, the Skyline Fascia System is manufactured from high quality, polyester powder coated aluminium.



Copings

The Skyline Coping System provides an economical and easily installed capping on upstand parapets to flat or pitched roofs. Available in flat or sloped versions and tested to withstand static pressures of 220mph. Skyline Coping System is a robust solution equally suited to retrofit and new build projects.



Column Casings

A range of aluminium column casings specially designed for fitting around columns to conceal unsightly structural elements and service ducts.



Anti-Climb

Designed with security in mind, preventing unauthorised access to the building roofscape. Skyline Anti-Climb Barriers comprise support brackets and preformed barrier sections. They can be fitted in front of virtually any gutter profile, resulting in a bold architectural feature.



Window Surrounds

A new and innovative range of modular aluminium window surrounds. Skyline Window Surrounds constitute a complete system that is simple to install, and which offers designers and specifiers a perfect combination of practicality, innovation, aesthetic appeal and low maintenance.



Canopies

For any scheme to maximise its potential, no detail should be viewed as too small to warrant detailed consideration. Skyline Architectural Aluminium Canopies can add that final touch to an exterior design scheme.

SKYLINE[®]

ARCHITECTURAL ALUMINIUM

www.alumascwms.co.uk

AWMS - BURTON LATIMER

Station Road
Burton Latimer
Kettering
Northamptonshire
NN15 5JP

+44 (0)1536 383 810
info@alumascwms.co.uk

ALUMASC[®]

WATER MANAGEMENT SOLUTIONS



www.alumascwms.co.uk